

# CHINA BASIN

**185 BERRY STREET**  
SAN FRANCISCO, CA 94107

**SUITE 1500 • 4,139 RSF**  
*AVAILABLE NOW*



**McCARTHY • COOK** **MC<sup>+</sup>**  
RELATIONSHIP DRIVEN EXPERIENCE  
Experience the Relationship  
McCARTHY • COOK

**McCarthy Cook & Co.**  
**RICHARD B. HAYES**  
Vice President/ N.CA Leasing  
415 992-5778  
[rbh@mccarthycook.com](mailto:rbh@mccarthycook.com)  
CA DRE License #01055368

**185 BERRY STREET**  
SAN FRANCISCO, CA 94107

**CHINA  
BASIN**

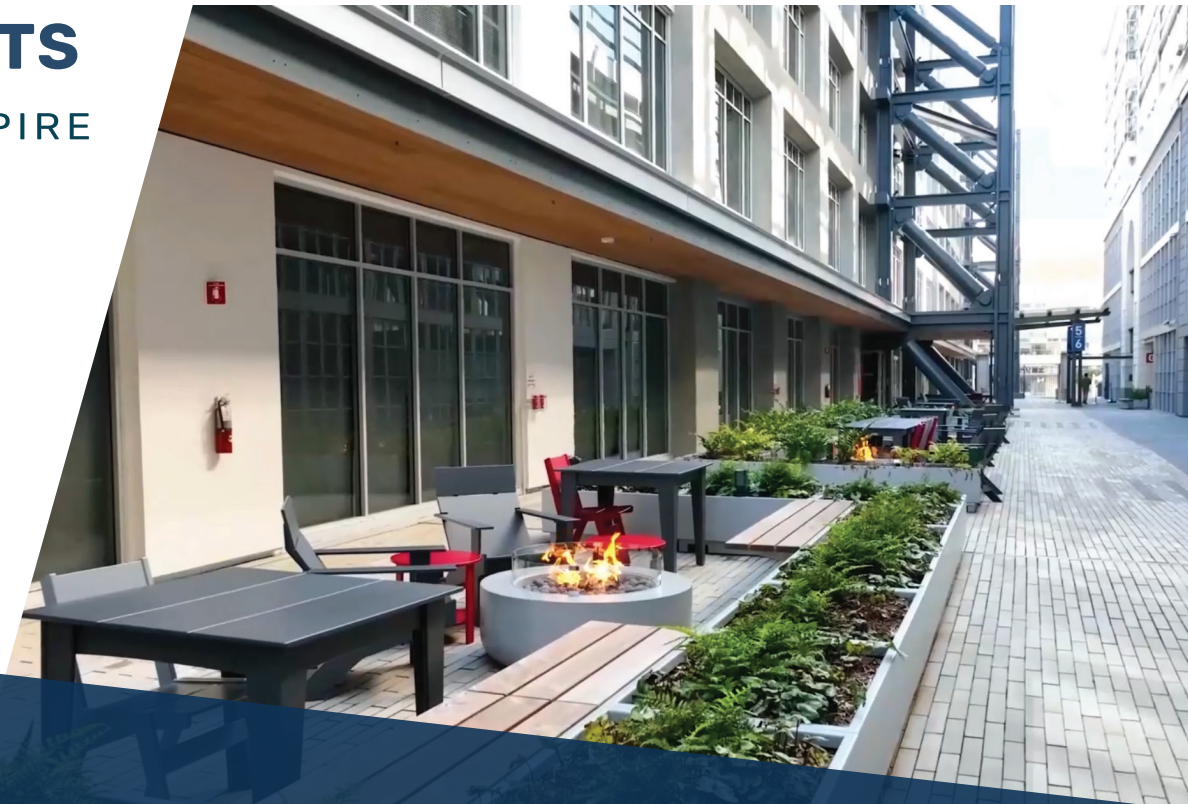
## SUITE 1500 HIGHLIGHTS

WHARFSIDE BUILDING

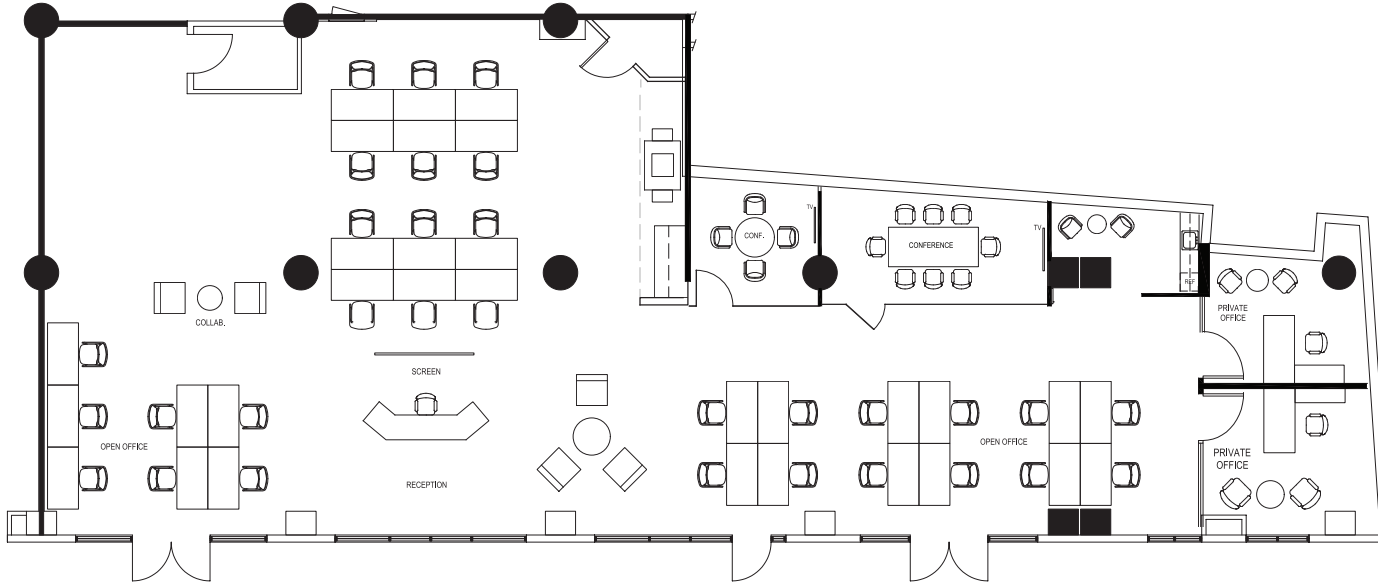
- 2 PRIVATE OFFICES
- 2 CONFERENCE ROOMS
- KITCHEN
- OPEN SEATING FOR 31
- COURTYARD ENTRANCE - NO ELEVATOR!

## NEW PROPERTY HIGHLIGHTS

- LIGHTING TO STIMULATE AND INSPIRE
- FOOD OFFERINGS TO ENGAGE
- CUSTOMER ENGAGEMENT CENTER
- LUXURY SHOWER SUITES
- INTELLIGENT NEW WAYFINDING
- SHARED CONFERENCE PAVILION AND HOSTED EVENT SPACE



SPACE PLAN



**SUITE 1500** (3,702 RSF)

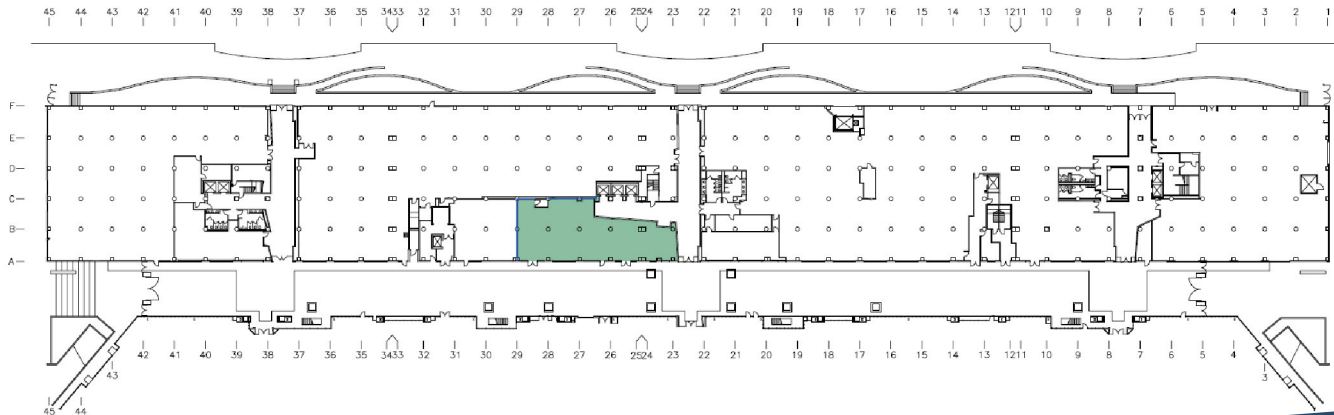
LARGE CONFERENCE ROOMS: 1  
 SMALL CONFERENCE ROOMS: 1  
 CONFERENCE ROOMS TOTAL: 2

WORK STATIONS: 29  
 PRIVATE OFFICE: 2  
 RECEPTION: 1  
 TOTAL: 32

TOTAL +-115 RSF/PERSON

WORK STATIONS: CONF. RMS 1:16

KEY PLAN



**McCarthy Cook & Co.**

**RICHARD B. HAYES**

Vice President/ N.CA Leasing

415 992-5778

[rbh@mccarthycook.com](mailto:rbh@mccarthycook.com)

CA BRE License #01055368